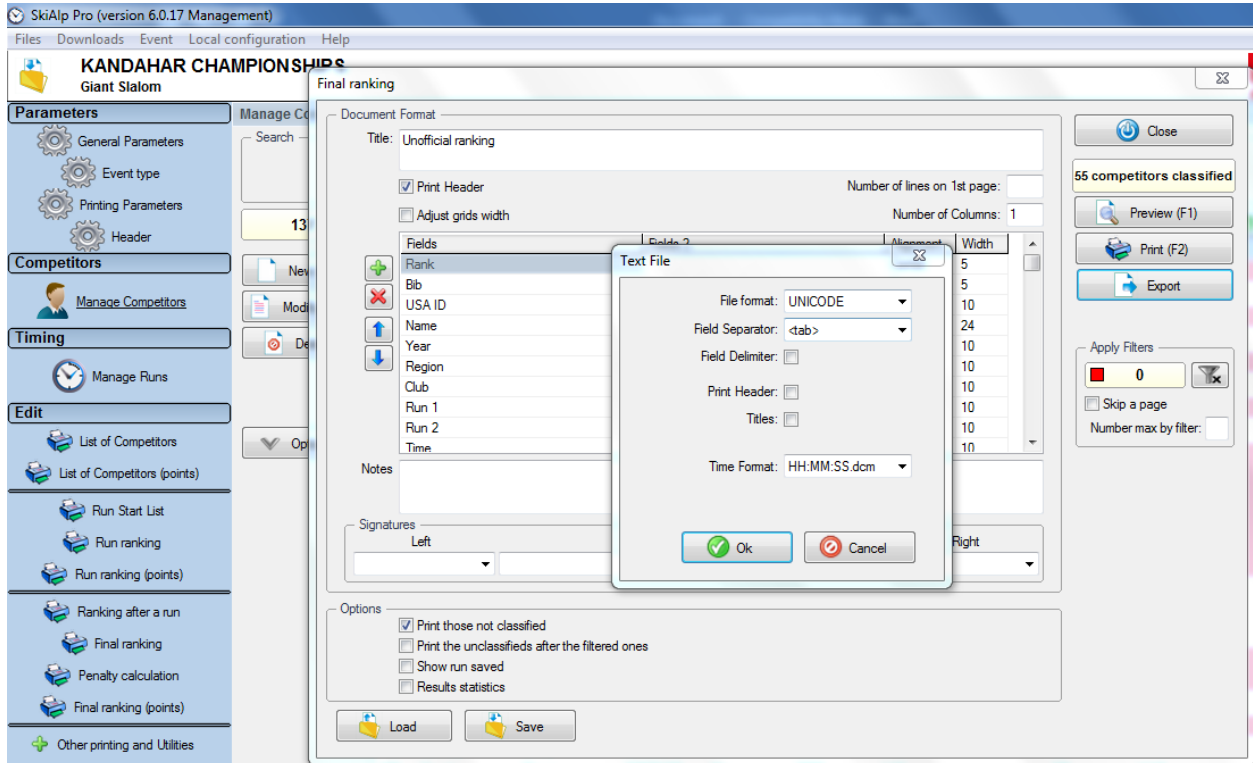


Brief overview of exporting results from Vola and into Split Second

Export the results for each gender.

Final Ranking, click export and choose text file.

Select the time format HH:MM:SS.dcm



Import into Split Second

File → Import → import from comma or tab separated file

Match the columns appropriately – First run results, second run results and BIB are the minimum

Select weather you want to import (without update), update, replace

Step 1 Set the items below to define the format of the file. View the general layout in the preview at the bottom of the screen.

Step 2 Define what each column in the file is used for by clicking on a cell in the 'Used for' column and selecting from the dropdown. A '--' means the column will be ignored

Define delimiter and columns:

Comma Separated

Tab Separated

How should duplicates be detected?

by Bib by USSA or FIS number

How to handle duplicates:

Don't overwrite when find a duplicate

Update (only change imported fields)

Replace

Lines to ignore

Often there are lines at the top of a file before the data begins. If so use this to ignore as many lines as needed. Make sure the first line of real data shows up in the preview below

Column	Used for:
Column 1	--
Column 2	Bib
Column 3	NAT Number
Column 4	Full Name
Column 5	Year of Birth
Column 6	--
Column 7	Club/Quota
Column 8	First Run Result
Column 9	Second Run Result
Column 10	--
Column 11	--

Preview

Column 1	Column 2	Column 3	Column 4	Column 5	Column 6	Column 7	Column 8
--	Bib	NAT Number	Full Name	Year of Birth	--	Club/Quota	First
1	99	E6600064	Ebert Gavin	2006		NYSEF	00:00:
2	106	E6528809	Norfolk Lincoln	2006		NYSEF	00:00:
3	89	E6470631	Goetz Garrett	2006		KB	00:00:
4	79	E6447174	Solly Hans	2006		HO	00:00:
5	105	E6504198	Scanlon Harry	2006		HV	00:00: